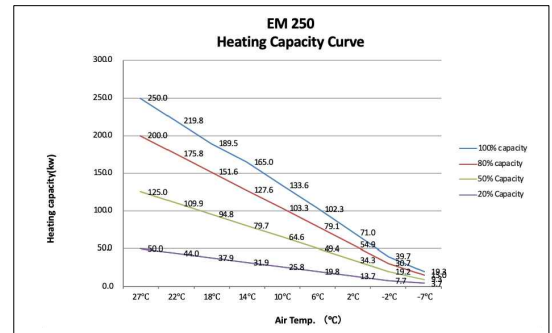
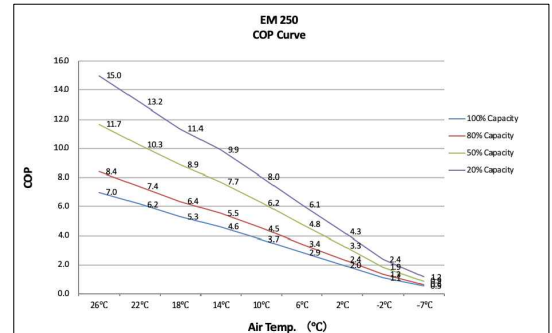


EM250 Technical sheet

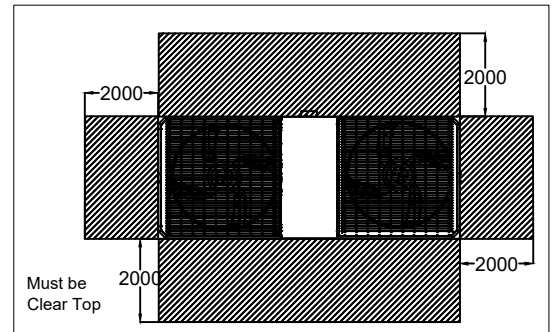
Specifications

Model	Elite Max 250
Coefficient of performance for different situations	
PERFORMANCE CONDITION: Air 27C / Water 27C/ Humid 80%	
Heating Capacity (kW)	250
COP at Maximum input	7.0
PERFORMANCE CONDITION: Air 15C / Water 26C/ Humid 70%	
Heating Capacity (kW)	185
COP at Maximum input	5.5
PERFORMANCE CONDITION: Air 35C / Water 28C/ Humid 80%	
Cooling Capacity (kW)	110
Components details	
Operating air temperature (C)	-15 ~ 43
Compressor	Mitsubishi Full Stepless DC compressor
Heat Exchanger	Twisted Titanium Heat exchanger
Fan direction	Vertical
Casing	Stainless Steel
Electrical details	
Power Supply	400 V 3 Ph/ 50 Hz
Rated input power (kW)	5.7 ~ 35.8
Rated input current (A)	52
Max input current (A)	68
Noise level	
Sound level at 1m dB(A)	72
Sound level at 10m dB(A)	52
Water flow details	
Advised Water flux (L/min) ± 20%	1200
Water connection (mm)	110
Profile details	
Net dimension LxWxH (mm)	2601 x 1051 x 2069
Net weight (kg)	1165

Heat Graphs



Ventilation



Unit Dimensions

