

*inver***ELITE**<sup>V4</sup>

*inver***ELITE**<sup>V3</sup>

*inver***ECLIPSE**<sup>PLUS</sup>

*inver***ECO**<sup>PLUS</sup>

*inver***ELITE**<sup>MAX</sup>

# HEAT PUMP POOL HEATERS



madimack

Powered by  **invermac**  
TECHNOLOGY

# WHAT ARE HEAT PUMPS?

Heat pumps operate by transferring heat from the air outside the heating unit to the water stored inside the heating unit via a 'heat exchange system'. The heated water is then efficiently pumped into your pool. Heat pumps are the most energy efficient way to heat your pool, using approximately one third of the energy used by alternative pool heating systems.

### WHAT SETS US APART

- Up to 15 year warranty on compressor
- TÜV Rheinland tested
- Highest efficiency
- Wi-Fi included across the range
- Patented quietest unit
- Full inverter technology
- Touchscreen easy to use controller
- Night Mode
- Built-in flow switch
- Automatic defrost system
- Titanium heat exchanger
- Centrifugal fan for quieter operation
- Compatible with Solar PV
- R32 Eco-friendly refrigerant
- Latest electronic expansion valve

### SERVICES

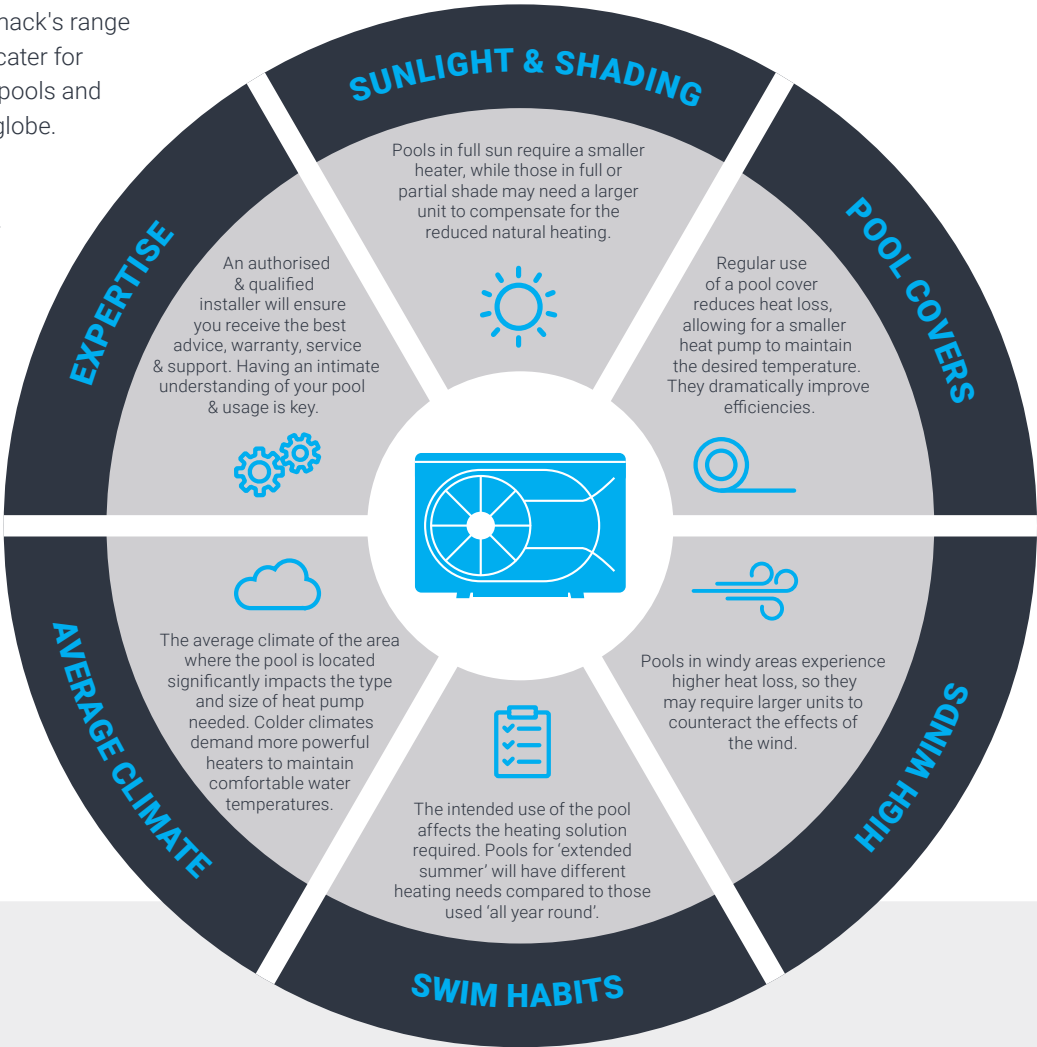
- Free to use online calculator
- Online warranty portal with 24-hour response
- In-depth installation and user manuals
- Contractor installation, training and advice
- Commercial energy modelling

### INVERTER TECHNOLOGY

- Longer unit lifetime
- Higher efficiency than on/off units
- Night mode and quiet mode built-in
- Soft start operation

## inverHEAT | GUIDANCE SPHERE

Choosing the right heat pump can be a daunting process. Madimack's range of advanced pool heaters cater for the variations in backyard pools and environments around the globe. Engaging a specialist to support you through the process can optimise your heating solution further.



Pioneered noise reduction technology, significantly reducing operational noise.



Synchronised perfect pairing with Madimack Pool Heat Pumps.



Intuitively adjusted flow rate to match capacity needs, providing significant energy savings and reduced wear and tear.



Residential application of a centrifugal fan-optimised airflow, efficient cooling and heating and overall enhanced performance.

Get full visibility on the running cost, pool heater sizing, unit dimensions, space requirement and more, with our instant pool heat pump calculator. Scan the QR code to find out more.



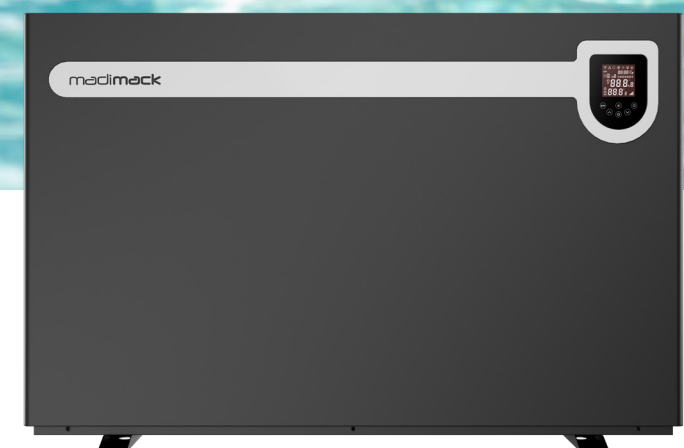
Scan code to find your Pool Heater Size







**World class performance.**  
**Pool heating and cooling solution.**





inverELITE V4



THE  
WORLD'S  
MOST  
EFFICIENT  
POOL HEAT  
PUMP



InverELITE V4 boasts an industry-leading COP of 22, it outperforms traditional heat pumps by a significant margin, translating to substantial energy cost savings for you. The InverELITE V4 isn't just efficient, it's the quietest and most effective pool heat pump in the market. InverELITE V4 breaks new ground with the world's first 3D ventilation system. The unit's revolutionary design significantly improves installation requirements and enhances operational efficiencies.

Madimack's InverELITE V4 is the world's most efficient, quietest and best performing pool heat pump.

World's Most Efficient Heat Pump

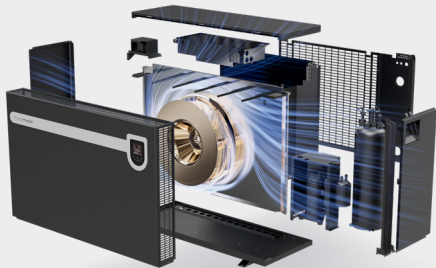
Triple Layered Sound Insulation

Plug & Play Simplicity

Revolutionary 3-Directional Airflow

Commercial Grade Centrifugal Fan

Twin Rotary Compressor



TECHNICAL  
SPECIFICATIONS



Model Name	inverElite V4 100	inverElite V4 120	inverElite V4 140	inverElite V4 170	inverElite V4 190	inverElite V4 230	inverElite V4 270	inverElite V4 330	inverElite V4 410
<b>PERFORMANCE CONDITION:</b> Air 27°C/ Water 27°C/ Humid. 80%									
Heating capacity (kW)	9.8	11.8	14.2	17.0	19.0	23.0	27.0	33.0	40.8
COP	19.5~7.0	19.7~7.2	20.2~7.2	20.4~7.2	20~7.0	22.0~7.3	21~7.2	20.3~7.1	18.9~7.0
<b>PERFORMANCE CONDITION:</b> Air 15°C/ Water 26°C/ Humid. 70%									
Heating capacity (kW)	6.8	8.1	9.6	11.5	13.0	15.0	18.5	22.7	29.0
COP	7.6~5.1	8.1~5.2	8.5~5.1	9.0~5.3	7.9~5.0	9.6~5.6	8.9~5.2	8.0~5.2	7.8~5.0
<b>PERFORMANCE CONDITION:</b> Air 35°C/ Water 28°C/ Humid. 80%									
Cooling Capacity (kW)	4.8	5.5	6.7	9.4	10.8	11.9	13.5	15.4	20.0
<b>TECHNICAL SPECIFICATIONS</b>									
Temperature set point range (°C)	5°C ~ 40°C								
Operating air temperature (°C)	-20°C ~ 43°C								
Casing	Aluminium-alloy Casing								
Power supply	230V/1Ph								400V 3Ph
Compressor	Twin-Rotary Mitsubishi DC Compressor								
Electrical Connection	10A Plug	10A Plug	10A Plug	Hardwired	Hardwired	Hardwired	Hardwired	Hardwired	Hardwired
Rated input power (kW)	0.16~1.33	0.19~1.56	0.23~1.88	0.26~2.17	0.31~2.6	0.32~2.68	0.43~3.56	0.52~4.37	0.70~5.80
Rated input current (A)	0.70~5.78	0.83~6.78	1.00~8.17	1.13~9.43	1.35~11.3	1.39~11.65	1.87~15.48	2.26~19.0	1.01~8.41
Max input current (A)	9	10	10.0	16.0	16.5	18.5	20.5	24	12.5
Sound level at 1m dB(A)	36.0~41.8	36.0~42.5	36.3~43.9	37.2~45.5	37.5~46.0	37.6~46.8	37.9~48.2	38.2~48.7	38.8~49.3
Sound level at 10m dB(A)	16.0~21.8	16.0~22.5	16.3~23.9	17.3~25.5	17.5~26.0	17.6~26.8	17.9~28.2	18.2~28.7	18.8~29.3
Advised water flow (L/min) ± 20%	70	85	100	135	140	180	220	260	290
Water pressure drop (kpa)	4	4	5	6	7	8	12	16	22
Gas	R32								
Water connection (mm)	40mm								
Gross Weight (kg)	92	92	92	100	104	112	148	181	216
Net Weight (kg)	83	83	83	90	94	100	125	154	186
Net dimension LxWxH (mm)	936x494x655	936x494x655	936x494x655	1036x494x655	1036x494x655	1104x494x757	1129x504x945	1310x514x945	1405x514x1070
Packaging dimension LxWxH (mm)	1005x550x685	1005x550x685	1005x550x685	1105x550x685	1105x550x685	1175x550x785	1198x560x985	1380x560x985	1475x560x1105

The data above is only for reference. For specific data, please refer to the nameplate on the unit. Acoustic data is to TuV international testing conditions, site conditions may differ

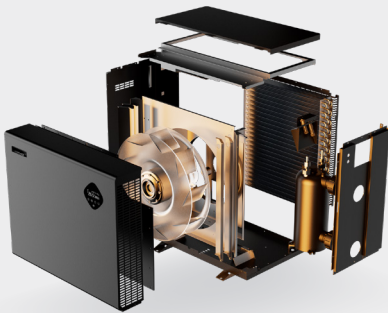


# PREMIUM VENTILATION AND ADVANCED OPERATION



The InverELITE V3 is a cutting-edge pool heating & cooling system, offering exceptional performance and efficiency for Australian pool owners. In conjunction with the newest inverter technology the unit delivers improved airflow, higher efficiency, quieter operation and performance. The InverELITE V3 offers space saving options for Australian backyards and performs at optimal levels even in coldest of conditions—achieving a massive 32kW in a single phase.

- Revolutionary design to dramatically reduce spatial requirements
- Extremely energy efficient with a COP of up to 16.4
- Full inverter stepless compressor and fan
- Six models up to 32kW in single phase
- Three phase 40kW model
- Patented silent design
- Marine grade anti-corrosion aluminium alloy casing
- Diamond touch screen and intuitive display
- Wi-Fi with smart functions
- 10 year compressor warranty
- Eco-friendly R32 Refrigerant
- Three coil evaporator for a more compact unit size
- TÜV Rheinland certified
- Up to 40 degrees set point temperature
- Centrifugal fan
- Advanced cold air performance



## TECHNICAL SPECIFICATIONS



Model	inverElite V3 110	inverElite V3 140	inverElite V3 170	inverElite V3 220	inverElite V3 270	inverElite V3 320	inverElite V3 400
<b>PERFORMANCE CONDITION:</b> Air 27°C/ Water 27°C/ Humid. 80%							
Heating capacity (kW) high speed	11.5	14	17	22.5	26.9	31.8	40.5
COP Range	16.0 ~ 7.3	16.0 ~ 7.4	16.1 ~ 7.1	16.2 ~ 7.1	16.1 ~ 7.3	16.4 ~ 7.2	16.0 ~ 7.0
<b>PERFORMANCE CONDITION:</b> Air 15°C/ Water 26°C/ Humid. 70%							
Heating capacity (kW) high speed	7.7	9.3	11.5	15.0	18.0	21.8	29.0
COP Range	7.5 ~ 5.0	7.6 ~ 5.1	7.8 ~ 5.0	8.2 ~ 5.1	7.9 ~ 5.1	8.0 ~ 5.2	8.3 ~ 5.1
<b>PERFORMANCE CONDITION:</b> Air 35°C/ Water 26°C/ Humid. 70%							
Cooling Capacity (kW) high speed	4.6	5.6	6.5	8.1	10.2	12.2	15.0
<b>TECHNICAL SPECIFICATIONS</b>							
Temperature set point range (°C)	12°C ~ 40°C						
Operating air temperature (°C)	-15°C ~ 43°C						
Compressor	Twin-Rotary Mitsubishi DC Compressor						
Heat exchanger	Twisted Titanium Heat Exchanger						
Casing	Marine Grade Aluminium Alloy						
Power supply	230V 1Ph						400V 3Ph
Electrical connection	10A plug	15A plug	Hard wired	Hard wired	Hard wired	Hard wired	Hard wired
Rated input power (kW)	0.24 ~ 1.79	0.29 ~ 2.16	0.36 ~ 2.67	0.45 ~ 3.33	0.54 ~ 4.0	0.59 ~ 4.36	0.78 ~ 5.8
Rated input current (A)	1.04 ~ 7.78	1.09 ~ 8.34	1.57 ~ 11.63	1.96 ~ 14.48	2.35 ~ 17.39	2.56 ~ 18.96	1.13 ~ 8.41
Maximum input current (A)	9	11	13	16	18	21	10.5
Sound level at 1m dB(A)	36.3 ~ 44.5	36.5 ~ 45.9	39.3 ~ 46.7	39.5~49.8	39.8~50.2	40.3 ~ 50.8	40.6 ~ 51.3
Sound level at 10m dB(A)	16.3~24.5	16.5 ~ 25.9	19.3 ~ 26.7	19.5~29.8	19.8~30.2	20.3 ~ 30.8	20.6 ~ 31.3
Advised water flow (L/Min) ±20%	65	80	100	125	150	180	230
Water connection (mm)	40						
Net weight (kg)	66	73	75	91	114	136	160
Net dimension LxWxH (mm)	750x504x656	750x504x656	839x504x656	979x504x756	1132x514x756	1029x512x1107	1139x512x1106

The data above is only for reference. For specific data, please refer to the nameplate on the unit. Acoustic data is to TuV international testing conditions, site conditions may differ

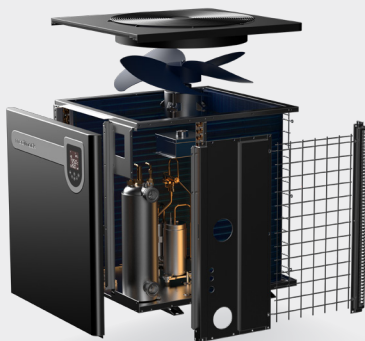


# TOP FAN COOLING AND HEATING SERIES



Designed and engineered to meet the highest requirements for cooling and heating options, with full inverter compressor and top discharge fan for a streamlined efficient air flow; rest assured that you own the latest eco friendly technology. Enjoy new possibilities for pool heating and cooling with the space saving and slick design. Limited space is no longer a concern.

- Full inverter stepless compressor and fan
- Titanium heat exchanger with 25-year warranty
- Advanced cold air performance
- Built-in flow switch and safety devices
- Extremely energy efficient with COP up to 15.9
- Wi-Fi as standard
- Cooling and heating
- Top discharge air outlet (ventilation) suitable for tight spaces
- Eco-friendly R32 Refrigerant
- Easy to use controller
- 3 models up to 26kW single-phase
- Marine Grade anti-corrosion aluminium alloy casing
- Intuitive shield controller with 7 day timers



## TECHNICAL SPECIFICATIONS



Model Name	inverEclipse Plus 160	inverEclipse Plus 210	inverEclipse Plus 260
<b>PERFORMANCE CONDITION:</b> Air 27°C/ Water 27°C/ Humid. 80%			
Heating capacity (kW)	16.5	21.0	26.0
COP Range	15.2 ~ 7.2	15.9 ~ 7.0	15.0 ~ 6.9
<b>PERFORMANCE CONDITION:</b> Air 15°C/ Water 26°C/ Humid. 70%			
Heating capacity (kW)	11.7	15.1	18.6
COP Range	7.2 ~ 5.1	7.8 ~ 5.0	7.5 ~ 4.8
<b>PERFORMANCE CONDITION:</b> Air 35°C/ Water 28°C/ Humid. 80%			
Cooling capacity (kW)	7.3	9.0	11.2
<b>TECHNICAL SPECIFICATIONS</b>			
Temperature set point range (°C)	12°C ~ 40°C		
Operating air temperature (°C)	-10°C ~ 43°C		
Compressor	Full Stepless DC Compressor		
Casing	Marine Grade Aluminum Alloy		
Heat exchanger	Twisted Titanium Heat Exchanger		
Power supply	240V 1Ph		
Electrical connection	15A plug	Hard wired	
Rated input power (kW)	0.38 ~ 2.33	0.45 ~ 3	0.84 ~ 3.91
Rated input current (A)	1.66 ~ 10.1	1.96 ~ 13	3.65 ~ 17
Maximum input current (A)	13.5	17	20
Sound level at 1m dB(A)	41.2 ~ 54.9	42.8 ~ 54.7	41.5 ~ 55.2
Sound level at 10m dB(A)	21.2 ~ 34.9	32.8 ~ 34.7	31.5 ~ 35.2
Advised water flow (L/Min) ±20%	100	125	150
Water connection (mm)	40		
Net weight (kg)	70	77	88
Net dimension L x W x H (mm)	780x710x656	780x710x656	780x710x756



# FRONT FACING VENTILATION



InverECO PLUS is Madimack's revamped InverECO range. The upgraded PLUS series now delivers heating and cooling capacity, a sleek, user-friendly interface, all wrapped up in a premium outer casing. Perfect for energy-conscious pool owners, InverECO PLUS ensures your pool stays at the ideal temperature year-round. With built-in Wi-Fi and innovative "low energy" and "night" modes, it enhances efficiency by up to 20%. InverECO PLUS simply and efficiently extends your family's swimming season, all while reducing energy consumption.

- Energy efficient with COP up to 11
- Full inverter compressor and inverter fan
- Five models up to 24 kW in single phase
- Quieter operation than on/off technology
- Easy to use controller
- Slim design
- Wi-Fi as standard
- Titanium heat exchanger with 25-year warranty
- Front discharge air outlet
- Reverse cycle defrost
- Built-in flow switch and safety devices
- Eco-friendly R32 Refrigerant
- TÜV Rheinland certified
- Up to 40 degrees set point temperature
- Intuitive shield controller with 7 day timers



# TECHNICAL SPECIFICATIONS



Model Name	inverECO PLUS 90	inverECO PLUS 130	inverECO PLUS 160	inverECO PLUS 200	inverECO PLUS 240	inverECO PLUS 280
PERFORMANCE CONDITION: Air 27°C/ Water 27°C/ Humid. 80%						
Heating capacity (kW)	9	13	16	20.2	24.2	28.0
COP Range	10.5 ~ 6.2	10.8 ~ 6.3	10.7 ~ 6.2	10.9 ~ 6.3	10.8 ~ 6.3	11-6.3
PERFORMANCE CONDITION: Air 15°C/ Water 26°C/ Humid. 70%						
Heating capacity (kW)	6.5	9	11	14	16	19.5
COP Range	6.5 ~ 4.2	6.2 ~ 4.5	6.6 ~ 4.3	6.4 ~ 4.3	6.6 ~ 4.5	6.5-4.4
PERFORMANCE CONDITION: Air 35°C/ Water 28°C/ Humid. 80%						
Cooling capacity (kW)	3.6	5	6.1	7.7	8.8	10.8
TECHNICAL SPECIFICATIONS						
Temperature set point range (°C)	12°C ~ 40°C					
Operating air temperature (°C)	-5°C ~ 43°C					
Compressor	Full Stepless DC Compressor					
Casing	Enhanced metallic structure					
Heat exchanger	Twisted Titanium Heat Exchanger					
Power supply	230V/1Ph/50Hz					
Electrical connection	10A plug	10A plug	Hard wired			
Rated input power (kW)	0.28 ~ 1.55	0.41 ~ 2.01	0.50 ~ 2.56	0.60 ~ 3.26	0.72 ~ 3.81	0.89-4.43
Rated input current (A)	1.21 ~ 6.73	1.76 ~ 8.70	2.17 ~ 11.12	2.61 ~ 14.16	3.13 ~ 16.56	3.87-19.3
Maximum input current (A)	10	10	17	19.2	20	23.5
Sound level at 1m dB(A)	41.6 ~ 53.5	43.9 ~ 54.0	46.2 ~ 57.3	46.3 ~ 58.1	46.9 ~ 58.7	48.6-60.5
Sound level at 10m dB(A)	21.6 ~ 33.5	23.9 ~ 34.0	26.2 ~ 37.3	26.3 ~ 38.1	26.9 ~ 38.7	28.6-40.5
Advised water flow (L/Min) ±20%	50	75	90	120	150	180
Water connection (mm)	40					
Net weight	46	49	60	68	68	68
Net dimension L x W x H (mm)	903x349x654	903x349x654	991x349x654	991x349x754	991x420x757	991x420x757





# COMMERCIAL HEAT PUMP SERIES



These powerful commercial heaters have the capacity to cope with the demands of any aquatic facility. Built with cutting edge technology and climate adaptive features, the Madimack commercial range keeps up all year round while reducing energy bills significantly. Of particular note is Madimack’s InverELITE Max—with market leading size to power ratio, providing optimised performance and ventilation. Madimack’s commercial units offer Wi-Fi as standard.

**MAIN BENEFITS**

- Extremely energy efficient with COP up to 16
- Full stepless inverter compressor and fan
- Dual Defrost
- Marine grade aluminium & stainless steel option
- RS485 connectivity ready
- Titanium heat exchanger with 25 year warranty
- Top discharge air outlet
- Reverse cycle defrost down to -10°C
- Industry leading physical size to performance ratio
- Up to 40 degrees set point temperature

**COMMERCIAL RANGE SERVICES**

- Bespoke system designs
- Energy modelling
- Full HVAC system
- Heat recovery
- Dehumidification
- Ventilation controls
- Integrated energy systems
- Servicing and maintenance
- Potable hot water generation
- Smart controls

## TECHNICAL SPECIFICATIONS

Model Name	inverElite Max 600	inverElite Max 1200	inverElite Max 2500
PERFORMANCE CONDITION: Air 27°C/ Water 27°C/ Humid. 80%			
Heating capacity (kW)	60	117	252
COP Range	16.0 ~ 6.2	16.1 ~ 6.3	16.0 ~ 6.3
PERFORMANCE CONDITION: Air 15°C/ Water 26°C/ Humid. 70%			
Heating capacity (kW)	40.1	85	185
COP Range	4.7 ~ 7.7	4.8 ~ 8	4.8 ~ 8
PERFORMANCE CONDITION: Air 35°C/ Water 28°C/ Humid. 80%			
Cooling capacity (kW)	24	45	110
TECHNICAL SPECIFICATIONS			
Temperature set point range (°C)	12°C ~ 40°C		
Operating air temperature (°C)	-10°C ~ 43°C		
Compressor	DC Inverter Compressor		
Casing	Aluminium Alloy		Stainless steel
Heat exchanger	Twisted Titanium Heat Exchanger		
Fan direction	Vertical		
Power supply	415V/3Ph/50Hz		
Rated input power (kW)	2.13 ~ 8.53	4.43 ~ 17.7	5.7 ~ 35.8
Rated input current (A)	3.08 ~ 12.36	6.42 ~ 25.65	8.3 ~ 51.9
Sound level at 1m dB(A)	53.0 ~ 61.0	55.0 ~ 64.0	58.0 ~ 72.0
Sound level at 10m dB(A)	33.0 ~ 41.0	35.0 ~ 44.0	38.0 ~ 52.0
Advised water flow (L/Min)	280 ~ 500	500 ~ 800	800 ~ 1200
Water connection (mm)	65	80	100
Net dimension L x W x H (mm)	1000x1110x1260	2100x1090x1280	2601x1051x2069
Net weight (kg)	212	448	1165



HEAT PUMP SIZES  
WITHOUT POOL COVER

Estimated unit size for pools **without a cover being used** and heated up to 28 degrees and max running times of approximately 10 hours.

Volume of water in litres	Season	Townsville	Brisbane	Sydney	Perth	Adelaide	Melbourne	Canberra
20000	Nov-Mar	9	9	9	9	9	13	16
	Oct-April	9	9	13	13	13	16	24
	Sept-May	9	9	13	16	20	24	32
	All-year	13	16	24	24	24	32	48
30000	Nov-Mar	9	9	9	13	13	20	24
	Oct-April	9	9	16	16	16	24	32
	Sept-May	9	13	20	24	24	32	48
	All-year	16	24	32	32	40	48	72
40000	Nov-Mar	9	9	13	13	16	32	32
	Oct-April	9	9	20	20	24	32	48
	Sept-May	9	16	24	32	40	48	60
	All-year	20	32	40	40	48	60	96
50000	Nov-Mar	9	9	16	16	20	32	40
	Oct-April	9	13	24	24	26	40	60
	Sept-May	13	24	32	40	40	60	80
	All-year	24	32	60	60	72	80	##
60000	Nov-Mar	9	9	20	20	24	40	48
	Oct-April	9	16	32	32	32	48	72
	Sept-May	16	24	40	48	60	72	##
	All-year	24	40	72	72	80	##	##

Heater sizes indicated above are selected from our wide range of heat pumps and some may require multiple units to match the kW required. Average pool dimensions used. Pools with greater surface area will suffer greater heat loss and may require larger unit. Average temperature, humidity and wind speed used for calculations, heat pump sizing in each location may vary on exact location. A thermal pool cover has been used for calculations in 'when a cover is used' table, other types may change requirement. At start-up from cold the heat pump will need to run for a longer period to reach the set temperature. Please see Madimack FAQs for more information. This table is to be used as a guide, please consult your installer. Madimack accepts no responsibility for incorrect sizing based on this table. A power requirement exceeding 33 kW needs a three-phase connection. ## Contact Madimack on 1300 899 737 for assistance in selecting the right heat pump.

HEAT PUMP SIZES  
WITH POOL COVER

TECHNICAL  
SPECIFICATIONS

Estimated unit size for pools **with a cover being used** and heated up to 28 degrees and max running times of approximately 10 hours.

Volume of water in litres	Season	Townsville	Brisbane	Sydney	Perth	Adelaide	Melbourne	Canberra
20000	Nov-Mar	9	9	9	9	9	9	9
	Oct-April	9	9	9	9	9	9	13
	Sept-May	9	9	9	9	9	13	16
	All-year	13	9	13	13	13	16	24
30000	Nov-Mar	9	9	9	9	9	9	9
	Oct-April	9	9	9	9	9	13	16
	Sept-May	9	9	13	13	16	20	24
	All-year	9	13	16	16	20	24	40
40000	Nov-Mar	9	9	9	9	9	13	13
	Oct-April	9	9	13	13	13	16	24
	Sept-May	9	9	13	16	20	24	32
	All-year	13	16	24	24	24	32	48
50000	Nov-Mar	9	9	9	9	9	13	16
	Oct-April	9	9	13	13	13	20	26
	Sept-May	9	13	16	20	24	32	40
	All-year	13	20	26	26	32	40	60
60000	Nov-Mar	9	9	9	9	9	16	20
	Oct-April	9	9	13	16	16	24	32
	Sept-May	9	13	20	24	26	32	48
	All-year	13	24	32	32	40	48	72



Scan code to find your  
Pool Heater Size

PRODUCT CATALOGUE

Review more products from Madimack’s market leading ranges



inver**ELITE**<sup>V3</sup>

SKU	ESV3-110	ESV3-140	ESV3-170	ESV3-220	ESV3-270	ESV3-320	ESV3-400
	11kW	14kW	17kW	22kW	27kW	32kW	40kW



inver**ELITE**<sup>V4</sup>

SKU	HPELV4 AU100	HPELV4 AU120	HPELV4 AU140	HPELV4 AU170	HPELV4 AU190	HPELV4 AU230	HPELV4 AU270	HPELV4 AU330	HPELV4 AU410
	10kW	12kW	14kW	17kW	19kW	23kW	27kW	33kW	41kW



inver**ECLIPSE**<sup>PLUS</sup>

SKU	HPECLIPLUS160	HPECLIPLUS210	HPECLIPLUS260
	16.5kW	21kW	26kW



inver**ECO**<sup>PLUS</sup>

SKU	HPECOPLUS 90	HPECOPLUS 130	HPECOPLUS 160	HPECOPLUS 200	HPECOPLUS 240	HPECOPLUS 280
	9kW	13kW	16kW	20kW	24kW	28kW



inver**ELITE**<sup>MAX</sup>

SKU	EM600	EM1200	EM2500
	60kW	117kW	252kW



inver**FLOW**<sup>ECO</sup>

SKU	INVFLO300	INVFLO400
Pump Size	1hp	1.5hp



inver**FLOW**<sup>PRO</sup>

SKU	INVPRO300	INVPRO400	INVPRO500
Pump Size	1hp	1.5hp	2hp



madimack  
**gt/freedom**

SKU	i30	i45	i60	i80
Endurance Time (Floor Mode)	3hr	4.5hr	6hr	8hr



inver**ter**<sup>PLUS</sup>

SKU	INVPLUS1100	INVPLUS2200
-----	-------------	-------------



inver**CHLOR**

SKU	SSCHLORAU10	SSCHLORAU20	SSCHLORAU30	SSCHLORAU40
Chlorine g/hr 3000ppm	10	20	30	40



elite**CLEAR**

SKU	PFELITECLEAR26	PFELITECLEAR28
Filter Diameter	635mm	710mm

eco**BLEND**

ecoBLEND glass media	15kg combined blend, premium grade, glass media
----------------------	---



madimack

[www.madimack.com](http://www.madimack.com)